

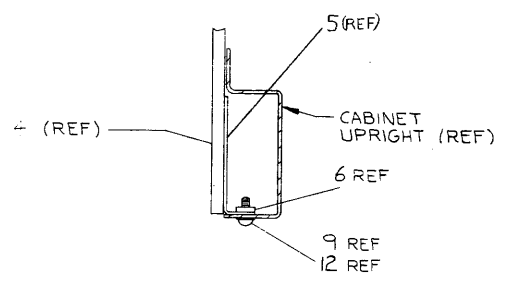
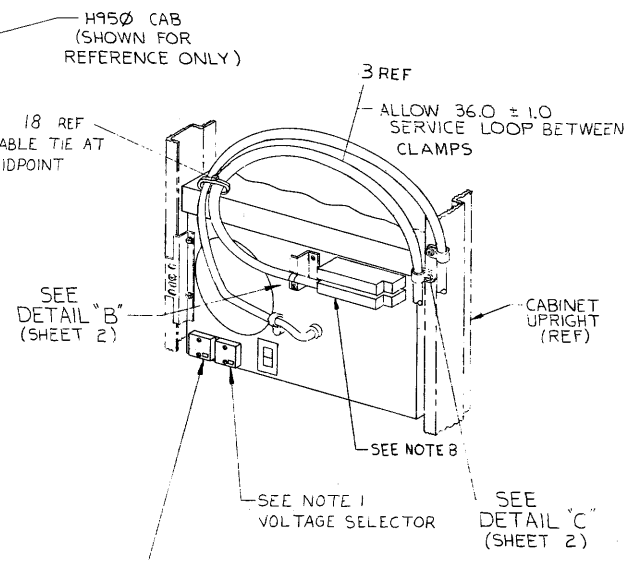
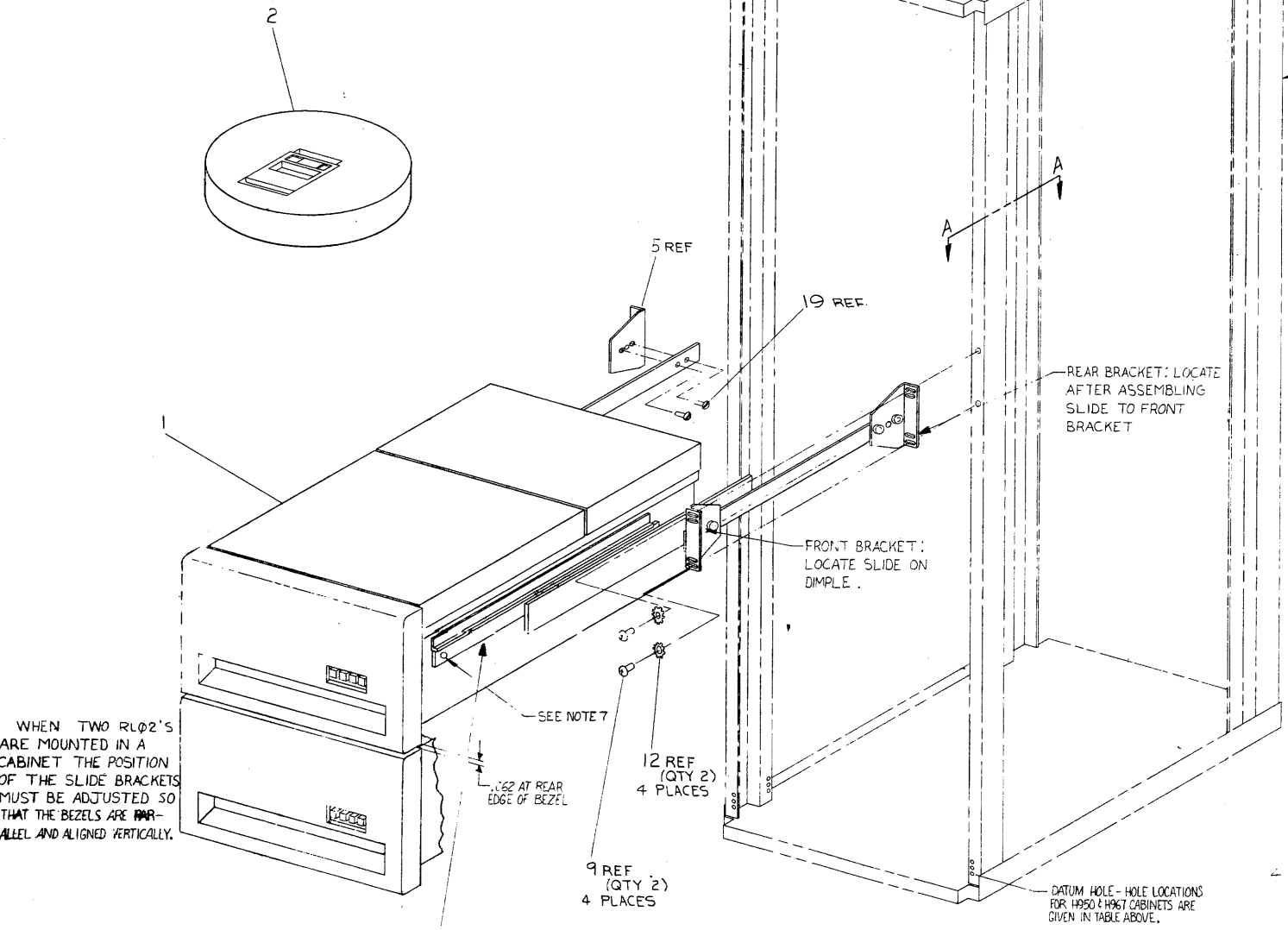
THIS DRAWING AND SPECIFICATIONS, FEDERAL ARE THE PROPERTY OF DIGITAL EQUIPMENT CORPORATION AND SHALL NOT BE REPRODUCED OR COPIED IN WHOLE OR IN PART OR IN ANY MANNER FOR THE MANUFACTURE OR SALE OF ITEMS WITHOUT WRITTEN PERMISSION. COPYRIGHT © 1978 DIGITAL EQUIPMENT CORPORATION

HOLE LOCATIONS FOR MOUNTING IN H950 AND H967 CABINETS

AVAILABLE SPACE DEPTH RLØ2	MOUNTING HOLES (FROM DATUM HOLE)	
	LOWER	UPPER
5.25	12	15
10.50	21	24
15.75	30	33
21.00	39	42
26.25	48	51
31.50	57	60

7. CONT
D. SECURE DRIVE TO SLIDES USING SCREWS SUPPLIED. (SEE DETAIL "F", SHEET 4)
TO REMOVE DRIVE, EXTEND SLIDES FULLY, REMOVE SCREWS, RELEASE LATCHES AND LIFT OFF.
8. FOR THE LAST DRIVE IN A SYSTEM, I/O CABLE PLUGS INTO EITHER SOCKET. TERMINATOR (SUPPLIED WITH CONTROLLER) PLUGS INTO THE OTHER.
NOTES CONT. ON SH. 2

- NOTES:
1. MACHINES ARE SHIPPED CONFIGURED FOR 110 V, AND NOMINAL VOLTAGE RANGE. FOR 220 V OPERATION REMOVE TWO SCREWS FROM "VOLTAGE SELECTOR" COVER WITHDRAW THE COVER, AND REINSERT TURNED UPSIDE DOWN. AFTER INSERTION, 220 MUST BE SHOWING THRU THE SMALL WINDOW. REPLACE THE TWO SCREWS, CUT OFF 110V PLUG ON THE POWER CORD, REPLACE BY 220 V PLUG (ITEM #20). FOR COLOR CODE SEE DETAIL "G", SHEET 4.
 2. "LOW LINE" AND "NOMINAL LINE" ARE DEFINED ON COVER OF "VOLTAGE RANGE SELECTOR" FOR LOW LINE VOLTAGE OPERATION REMOVE TWO SCREWS FROM "VOLTAGE RANGE SELECTOR" COVER, WITHDRAW THE COVER AND RE-INSERT IT TURNED UPSIDE DOWN. AFTER INSERTION, "LOW" MUST BE SHOWING THRU THE SMALL WINDOW. REPLACE THE TWO SCREWS.
 3. WHEN AN RLØ2-AK IS ORDERED IN CONJUNCTION WITH H9500, H9501, H9502, H9503, H9600, H9601, H9602, H9603 INTERLOCK KIT(S) (REF 21) OR CABLE RESTRAINT SYSTEM(S) (REF 22) MUST BE ORDERED AND INSTALLED.
 4. WHEN AN RLØ2-AK IS ORDERED IN CONJUNCTION WITH A H95Ø3/H96Ø3 THE TRIM PIECES (H9514-B) MUST BE ORDERED.
 5. WHEN AN RLØ2-AK IS ORDERED IN CONJUNCTION WITH A H95Ø1/H96Ø1 TRIM PIECES (H9514-A) MUST BE ORDERED.



SECTION A-A
(SHOWING TYPICAL MOUNTING OF CHASSIS SLIDES TO CABINET UPRIGHTS)
SCALE: NONE

6. TO ATTACH SHIPPING BRACKET (ITEM 7) REMOVE TWO SCREWS AND TWO LOCKWASHERS FROM ONE SIDE OF THE POWER PANEL ON THE REAR OF DISK DRIVE (ITEM 1), POSITION A SHIPPING BRACKET TO DETERMINE LOCATION OF "U" NUT (ITEM 13) AND ATTACH BRACKET USING ORIGINAL SCREWS AND LOCKWASHERS AND ITEMS 12 AND 9 (AS SHOWN IN DETAIL "D") BRACKET MAY BE ATTACHED TO EITHER SIDE OF UNIT.
7. TO MOUNT RLØ2 IN CABINET:
A. MOUNT BRACKETS AND SLIDES TO UPRIGHTS.
B. EXTEND SLIDES AS FAR AS POSSIBLE BY RELEASING CATCHES. (SEE DETAIL "F" SHT 4)
C. PLACE DRIVE ON SLIDES AND PUSH BACK UNTIL ENDS OF RAILS FIT UNDER TAB ON SLIDES AND LATCHES ENGAGE.

CAUTION: OFF SHEET PARTS LIST EXISTS. SEE K-PL-RLØ2-AK-DBP (Z0848).

REV.	DESCRIPTION	DATE	BY	CHKD.
1	CHANGE IN ECO CONTROL AT REV 1000			
2	ADD PER FOR			
3	REVISED			
4	REVISED			
5	REVISED			
6	REVISED			
7	REVISED			
8	REVISED			

DESCRIPTION	DWG. PART NO.	ITEM NO.
UNLESS OTHERWISE SPECIFIED DIMENSIONS ARE IN INCHES		
ANGLES		
CLASS OF ACCURACY		
SURFACE QUALITY		
QUANTITY & VARIATION		
THIRD ANGLE PROJECTION		
REMOVE BURR AND BREAK SHARP CORNERS		
DO NOT SCALE DWG		
MATERIAL SEE PARTS LIST		
FINISH		

DESCRIPTION	DWG. PART NO.	ITEM NO.
UNLESS OTHERWISE SPECIFIED DIMENSIONS ARE IN INCHES		
ANGLES		
CLASS OF ACCURACY		
SURFACE QUALITY		
QUANTITY & VARIATION		
THIRD ANGLE PROJECTION		
REMOVE BURR AND BREAK SHARP CORNERS		
DO NOT SCALE DWG		
MATERIAL SEE PARTS LIST		
FINISH		

DESCRIPTION	DWG. PART NO.	ITEM NO.
UNLESS OTHERWISE SPECIFIED DIMENSIONS ARE IN INCHES		
ANGLES		
CLASS OF ACCURACY		
SURFACE QUALITY		
QUANTITY & VARIATION		
THIRD ANGLE PROJECTION		
REMOVE BURR AND BREAK SHARP CORNERS		
DO NOT SCALE DWG		
MATERIAL SEE PARTS LIST		
FINISH		

DESCRIPTION	DWG. PART NO.	ITEM NO.
UNLESS OTHERWISE SPECIFIED DIMENSIONS ARE IN INCHES		
ANGLES		
CLASS OF ACCURACY		
SURFACE QUALITY		
QUANTITY & VARIATION		
THIRD ANGLE PROJECTION		
REMOVE BURR AND BREAK SHARP CORNERS		
DO NOT SCALE DWG		
MATERIAL SEE PARTS LIST		
FINISH		

DESCRIPTION	DWG. PART NO.	ITEM NO.
UNLESS OTHERWISE SPECIFIED DIMENSIONS ARE IN INCHES		
ANGLES		
CLASS OF ACCURACY		
SURFACE QUALITY		
QUANTITY & VARIATION		
THIRD ANGLE PROJECTION		
REMOVE BURR AND BREAK SHARP CORNERS		
DO NOT SCALE DWG		
MATERIAL SEE PARTS LIST		
FINISH		

DESCRIPTION	DWG. PART NO.	ITEM NO.
UNLESS OTHERWISE SPECIFIED DIMENSIONS ARE IN INCHES		
ANGLES		
CLASS OF ACCURACY		
SURFACE QUALITY		
QUANTITY & VARIATION		
THIRD ANGLE PROJECTION		
REMOVE BURR AND BREAK SHARP CORNERS		
DO NOT SCALE DWG		
MATERIAL SEE PARTS LIST		
FINISH		

DESCRIPTION	DWG. PART NO.	ITEM NO.
UNLESS OTHERWISE SPECIFIED DIMENSIONS ARE IN INCHES		
ANGLES		
CLASS OF ACCURACY		
SURFACE QUALITY		
QUANTITY & VARIATION		
THIRD ANGLE PROJECTION		
REMOVE BURR AND BREAK SHARP CORNERS		
DO NOT SCALE DWG		
MATERIAL SEE PARTS LIST		
FINISH		

DESCRIPTION	DWG. PART NO.	ITEM NO.
UNLESS OTHERWISE SPECIFIED DIMENSIONS ARE IN INCHES		
ANGLES		
CLASS OF ACCURACY		
SURFACE QUALITY		
QUANTITY & VARIATION		
THIRD ANGLE PROJECTION		
REMOVE BURR AND BREAK SHARP CORNERS		
DO NOT SCALE DWG		
MATERIAL SEE PARTS LIST		
FINISH		

DESCRIPTION	DWG. PART NO.	ITEM NO.
UNLESS OTHERWISE SPECIFIED DIMENSIONS ARE IN INCHES		
ANGLES		
CLASS OF ACCURACY		
SURFACE QUALITY		
QUANTITY & VARIATION		
THIRD ANGLE PROJECTION		
REMOVE BURR AND BREAK SHARP CORNERS		
DO NOT SCALE DWG		
MATERIAL SEE PARTS LIST		
FINISH		

DESCRIPTION	DWG. PART NO.	ITEM NO.
UNLESS OTHERWISE SPECIFIED DIMENSIONS ARE IN INCHES		
ANGLES		
CLASS OF ACCURACY		
SURFACE QUALITY		
QUANTITY & VARIATION		
THIRD ANGLE PROJECTION		
REMOVE BURR AND BREAK SHARP CORNERS		
DO NOT SCALE DWG		
MATERIAL SEE PARTS LIST		
FINISH		

DESCRIPTION	DWG. PART NO.	ITEM NO.
UNLESS OTHERWISE SPECIFIED DIMENSIONS ARE IN INCHES		
ANGLES		
CLASS OF ACCURACY		
SURFACE QUALITY		
QUANTITY & VARIATION		
THIRD ANGLE PROJECTION		
REMOVE BURR AND BREAK SHARP CORNERS		
DO NOT SCALE DWG		
MATERIAL SEE PARTS LIST		
FINISH		

DESCRIPTION	DWG. PART NO.	ITEM NO.
UNLESS OTHERWISE SPECIFIED DIMENSIONS ARE IN INCHES		
ANGLES		
CLASS OF ACCURACY		
SURFACE QUALITY		
QUANTITY & VARIATION		
THIRD ANGLE PROJECTION		
REMOVE BURR AND BREAK SHARP CORNERS		
DO NOT SCALE DWG		
MATERIAL SEE PARTS LIST		
FINISH		

DESCRIPTION	DWG. PART NO.	ITEM NO.
UNLESS OTHERWISE SPECIFIED DIMENSIONS ARE IN INCHES		
ANGLES		
CLASS OF ACCURACY		
SURFACE QUALITY		
QUANTITY & VARIATION		
THIRD ANGLE PROJECTION		
REMOVE BURR AND BREAK SHARP CORNERS		
DO NOT SCALE DWG		
MATERIAL SEE PARTS LIST		
FINISH		

DESCRIPTION	DWG. PART NO.	ITEM NO.
UNLESS OTHERWISE SPECIFIED DIMENSIONS ARE IN INCHES		
ANGLES		
CLASS OF ACCURACY		
SURFACE QUALITY		
QUANTITY & VARIATION		
THIRD ANGLE PROJECTION		
REMOVE BURR AND BREAK SHARP CORNERS		
DO NOT SCALE DWG		
MATERIAL SEE PARTS LIST		
FINISH		

DESCRIPTION	DWG. PART NO.	ITEM NO.
UNLESS OTHERWISE SPECIFIED DIMENSIONS ARE IN INCHES		
ANGLES		
CLASS OF ACCURACY		
SURFACE QUALITY		
QUANTITY & VARIATION		
THIRD ANGLE PROJECTION		
REMOVE BURR AND BREAK SHARP CORNERS		
DO NOT SCALE DWG		
MATERIAL SEE PARTS LIST		
FINISH		

DESCRIPTION	DWG. PART NO.	ITEM NO.
UNLESS OTHERWISE SPECIFIED DIMENSIONS ARE IN INCHES		
ANGLES		
CLASS OF ACCURACY		
SURFACE QUALITY		
QUANTITY & VARIATION		
THIRD ANGLE PROJECTION		
REMOVE BURR AND BREAK SHARP CORNERS		
DO NOT SCALE DWG		
MATERIAL SEE PARTS LIST		
FINISH		

DESCRIPTION	DWG. PART NO.	ITEM NO.
UNLESS OTHERWISE SPECIFIED DIMENSIONS ARE IN INCHES		
ANGLES		
CLASS OF ACCURACY		
SURFACE QUALITY		
QUANTITY & VARIATION		
THIRD ANGLE PROJECTION		
REMOVE BURR AND BREAK SHARP CORNERS		
DO NOT SCALE DWG		
MATERIAL SEE PARTS LIST		
FINISH		

DESCRIPTION	DWG. PART NO.	ITEM NO.
UNLESS OTHERWISE SPECIFIED DIMENSIONS ARE IN INCHES		
ANGLES		
CLASS OF ACCURACY		
SURFACE QUALITY		
QUANTITY & VARIATION		
THIRD ANGLE PROJECTION		
REMOVE BURR AND BREAK SHARP CORNERS		
DO NOT SCALE DWG		
MATERIAL SEE PARTS LIST		
FINISH		

DESCRIPTION	DWG. PART NO.	ITEM NO.
UNLESS OTHERWISE SPECIFIED DIMENSIONS ARE IN INCHES		
ANGLES		
CLASS OF ACCURACY		
SURFACE QUALITY		
QUANTITY & VARIATION		
THIRD ANGLE PROJECTION		
REMOVE BURR AND BREAK SHARP CORNERS		
DO NOT SCALE DWG		
MATERIAL SEE PARTS LIST		
FINISH		

DESCRIPTION	DWG. PART NO.	ITEM NO.
UNLESS OTHERWISE SPECIFIED DIMENSIONS ARE IN INCHES		
ANGLES		
CLASS OF ACCURACY		
SURFACE QUALITY		
QUANTITY & VARIATION		
THIRD ANGLE PROJECTION		
REMOVE BURR AND BREAK SHARP CORNERS		
DO NOT SCALE DWG		
MATERIAL SEE PARTS LIST		
FINISH		

DESCRIPTION	DWG. PART NO.	ITEM NO.
UNLESS OTHERWISE SPECIFIED DIMENSIONS ARE IN INCHES		
ANGLES		
CLASS OF ACCURACY		
SURFACE QUALITY		
QUANTITY & VARIATION		
THIRD ANGLE PROJECTION		
REMOVE BURR AND BREAK SHARP CORNERS		
DO NOT SCALE DWG		
MATERIAL SEE PARTS LIST		
FINISH		

DESCRIPTION	DWG. PART NO.	ITEM NO.
UNLESS OTHERWISE SPECIFIED DIMENSIONS ARE IN INCHES		
ANGLES		
CLASS OF ACCURACY		
SURFACE QUALITY		
QUANTITY & VARIATION		
THIRD ANGLE PROJECTION		
REMOVE BURR AND BREAK SHARP CORNERS		
DO NOT SCALE DWG		
MATERIAL SEE PARTS LIST		
FINISH		

DESCRIPTION	DWG. PART NO.	ITEM NO.
UNLESS OTHERWISE SPECIFIED DIMENSIONS ARE IN INCHES		
ANGLES		
CLASS OF ACCURACY		
SURFACE QUALITY		
QUANTITY & VARIATION		
THIRD ANGLE PROJECTION		
REMOVE BURR AND BREAK SHARP CORNERS		
DO NOT SCALE DWG		
MATERIAL SEE PARTS LIST		
FINISH		

DESCRIPTION	DWG. PART NO.	ITEM NO.
UNLESS OTHERWISE SPECIFIED DIMENSIONS ARE IN INCHES		
ANGLES		
CLASS OF ACCURACY		
SURFACE QUALITY		
QUANTITY & VARIATION		
THIRD ANGLE PROJECTION		
REMOVE BURR AND BREAK SHARP CORNERS		
DO NOT SCALE DWG		
MATERIAL SEE PARTS LIST		
FINISH		

DESCRIPTION	DWG. PART NO.	ITEM NO.
UNLESS OTHERWISE SPECIFIED DIMENSIONS ARE IN INCHES		
ANGLES		
CLASS OF ACCURACY		
SURFACE QUALITY		
QUANTITY & VARIATION		
THIRD ANGLE PROJECTION		
REMOVE BURR AND BREAK SHARP CORNERS		
DO NOT SCALE DWG		
MATERIAL SEE PARTS LIST		
FINISH		

DESCRIPTION	DWG. PART NO.	ITEM NO.
UNLESS OTHERWISE SPECIFIED DIMENSIONS ARE IN INCHES		
ANGLES		
CLASS OF ACCURACY		
SURFACE QUALITY		
QUANTITY & VARIATION		
THIRD ANGLE PROJECTION		
REMOVE BURR AND BREAK SHARP CORNERS		
DO NOT SCALE DWG		
MATERIAL SEE PARTS LIST		
FINISH		

DESCRIPTION	DWG. PART NO.	ITEM NO.
UNLESS OTHERWISE SPECIFIED DIMENSIONS ARE IN INCHES		
ANGLES		
CLASS OF ACCURACY		
SURFACE QUALITY		
QUANTITY & VARIATION		
THIRD ANGLE PROJECTION		

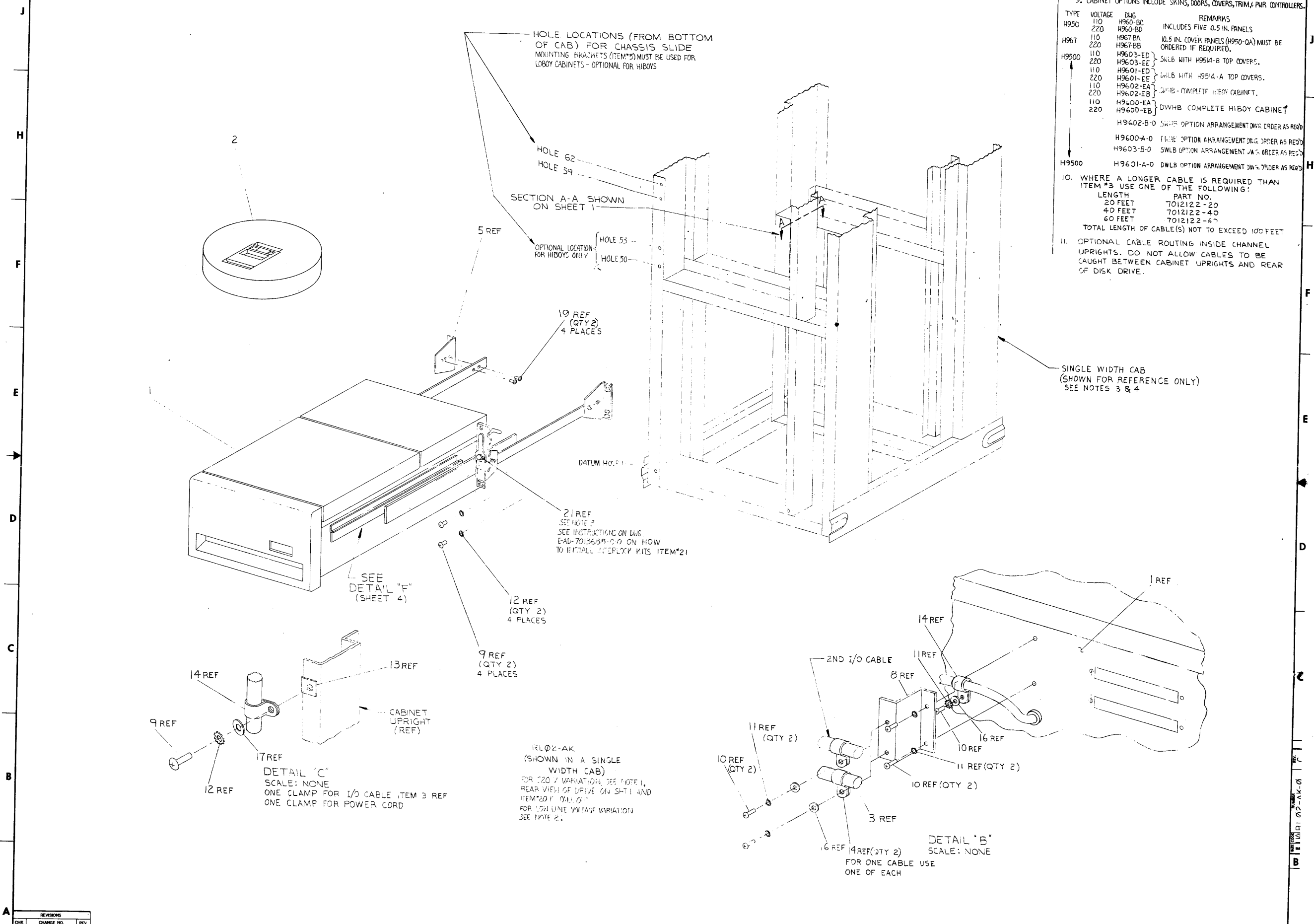
THIS DRAWING AND SPECIFICATIONS, HEREIN ARE THE PROPERTY OF DIGITAL EQUIPMENT CORPORATION AND SHALL NOT BE REPRODUCED OR COPIED OR USED IN WHOLE OR IN PART AS THE BASIS FOR THE MANUFACTURE OR SALE OF ITEMS WITHOUT WRITTEN PERMISSION.
COPYRIGHT © 1978 DIGITAL EQUIPMENT CORPORATION

NOTES: (CONT.)

9. CABINET OPTIONS INCLUDE SKINS, DOORS, COVERS, TRIM, & PWR CONTROLLERS.

TYPE	VOLTAGE	DWG	REMARKS
H950	110	H960-BC	INCLUDES FIVE 10.5 IN. PANELS
	220	H960-BD	
H967	110	H967-BA	10.5 IN. COVER PANELS (H950-QA) MUST BE ORDERED IF REQUIRED.
	220	H967-BB	
H9500	110	H9603-ED	SWLB WITH H9514-B TOP COVERS.
	220	H9603-EE	
	110	H9601-ED	DWLB WITH H9514-A TOP COVERS.
	220	H9601-EE	
	110	H9602-EA	DWLB - COMPLETE HI-BOY CABINET.
	220	H9602-EB	
	110	H9600-EA	DWVHB - COMPLETE HI-BOY CABINET
	220	H9600-EB	
		H9602-B-D	SWLB OPTION ARRANGEMENT DWG ORDER AS REQ'D
		H9600-A-D	DWLB OPTION ARRANGEMENT DWG ORDER AS REQ'D
		H9603-B-D	SWLB OPTION ARRANGEMENT DWG ORDER AS REQ'D
H9500		H9601-A-D	DWLB OPTION ARRANGEMENT DWG ORDER AS REQ'D

10. WHERE A LONGER CABLE IS REQUIRED THAN ITEM #3 USE ONE OF THE FOLLOWING:
- | LENGTH | PART NO. |
|---------|------------|
| 20 FEET | 7012122-20 |
| 40 FEET | 7012122-40 |
| 60 FEET | 7012122-60 |
- TOTAL LENGTH OF CABLE(S) NOT TO EXCEED 100 FEET
11. OPTIONAL CABLE ROUTING INSIDE CHANNEL UPRIGHTS. DO NOT ALLOW CABLES TO BE CAUGHT BETWEEN CABINET UPRIGHTS AND REAR OF DISK DRIVE.



RL02-AK
(SHOWN IN A SINGLE WIDTH CAB)
FOR 220 V VARIATION, SEE NOTE 1, REAR VIEW OF DRIVE ON SHT 1 AND ITEM #20 IN DWG 01.
FOR 110V LINE VOLTAGE VARIATION SEE NOTE 2.

DETAIL "C"
SCALE: NONE
ONE CLAMP FOR I/O CABLE ITEM #3 REF
ONE CLAMP FOR POWER CORD

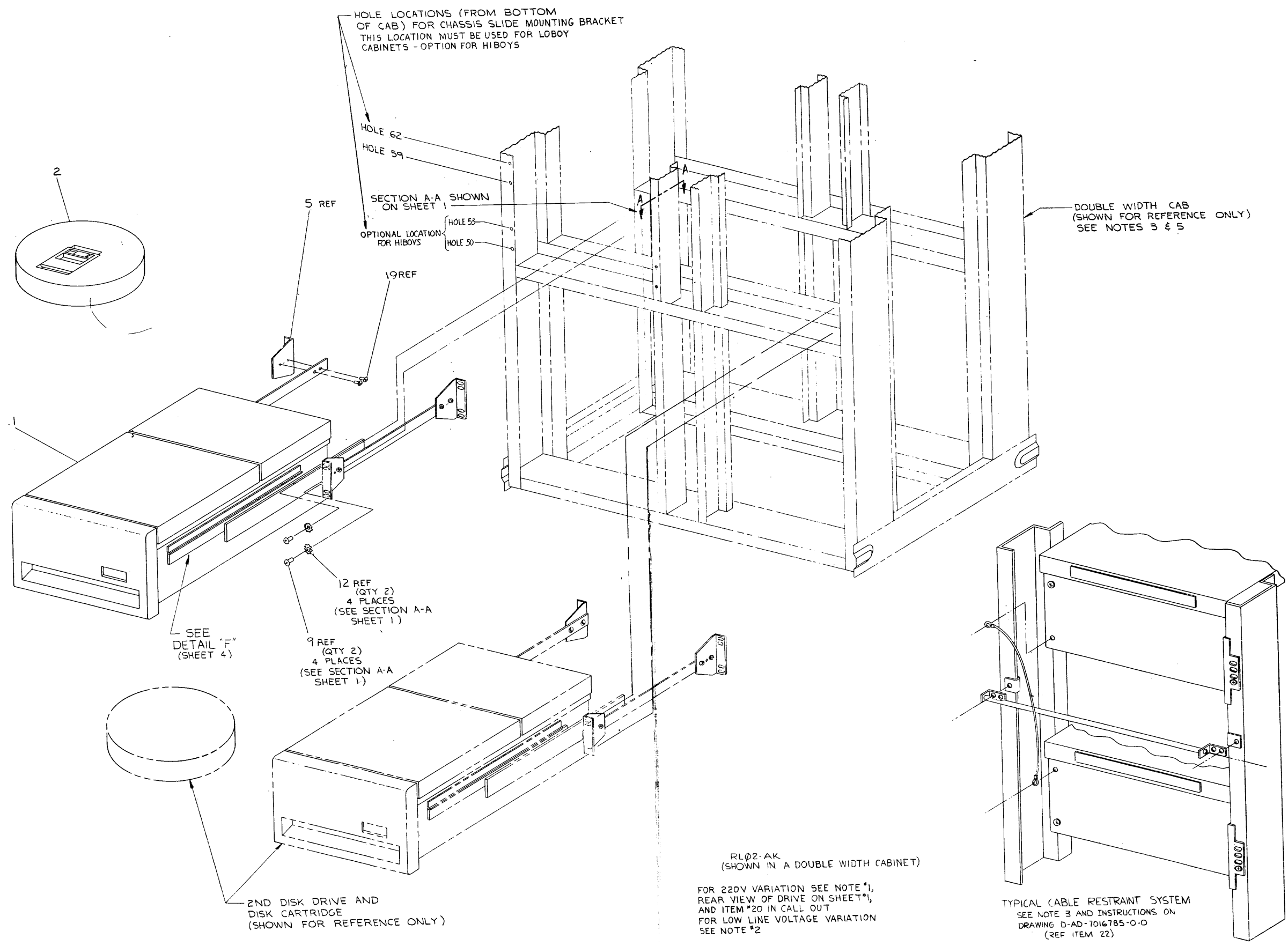
DETAIL "B"
SCALE: NONE
FOR ONE CABLE USE ONE OF EACH

REVISIONS		
CHK	CHANGE NO.	REV.

THIS DRAWING AND SPECIFICATIONS, HEREIN, ARE THE PROPERTY OF DIGITAL EQUIPMENT CORPORATION AND SHALL NOT BE REPRODUCED OR COPIED IN WHOLE OR IN PART WITHOUT THE WRITTEN PERMISSION OF DIGITAL EQUIPMENT CORPORATION.
COPYRIGHT © 1975, DIGITAL EQUIPMENT CORPORATION

J
H
F
E
D
C
B
A

J
H
F
E
D
C
B
A

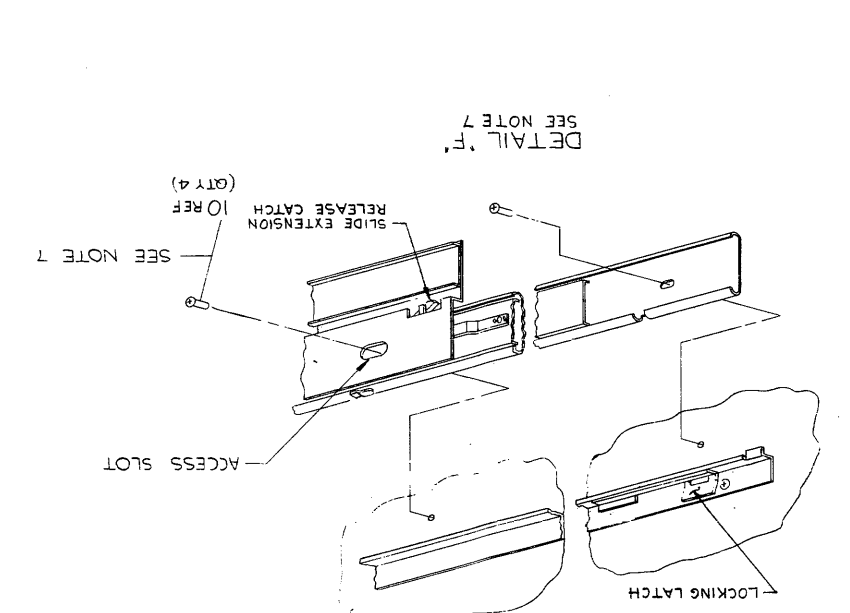
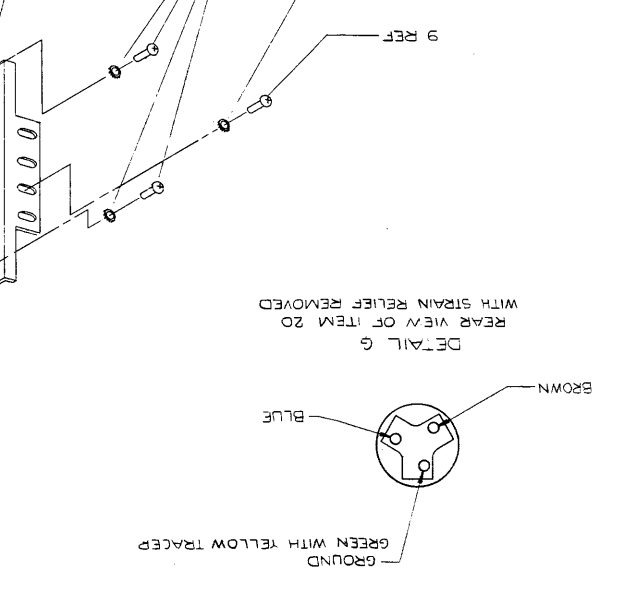
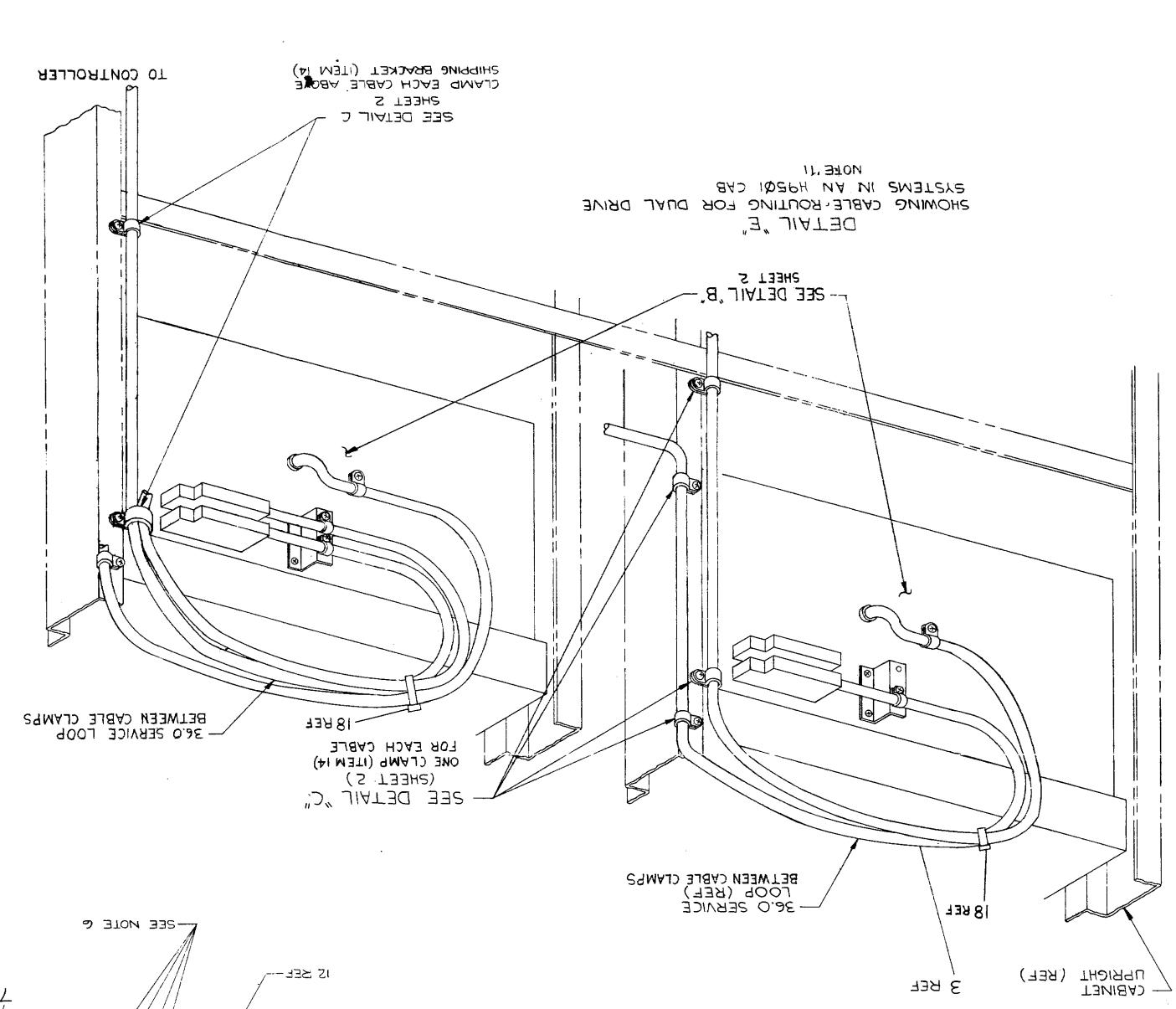
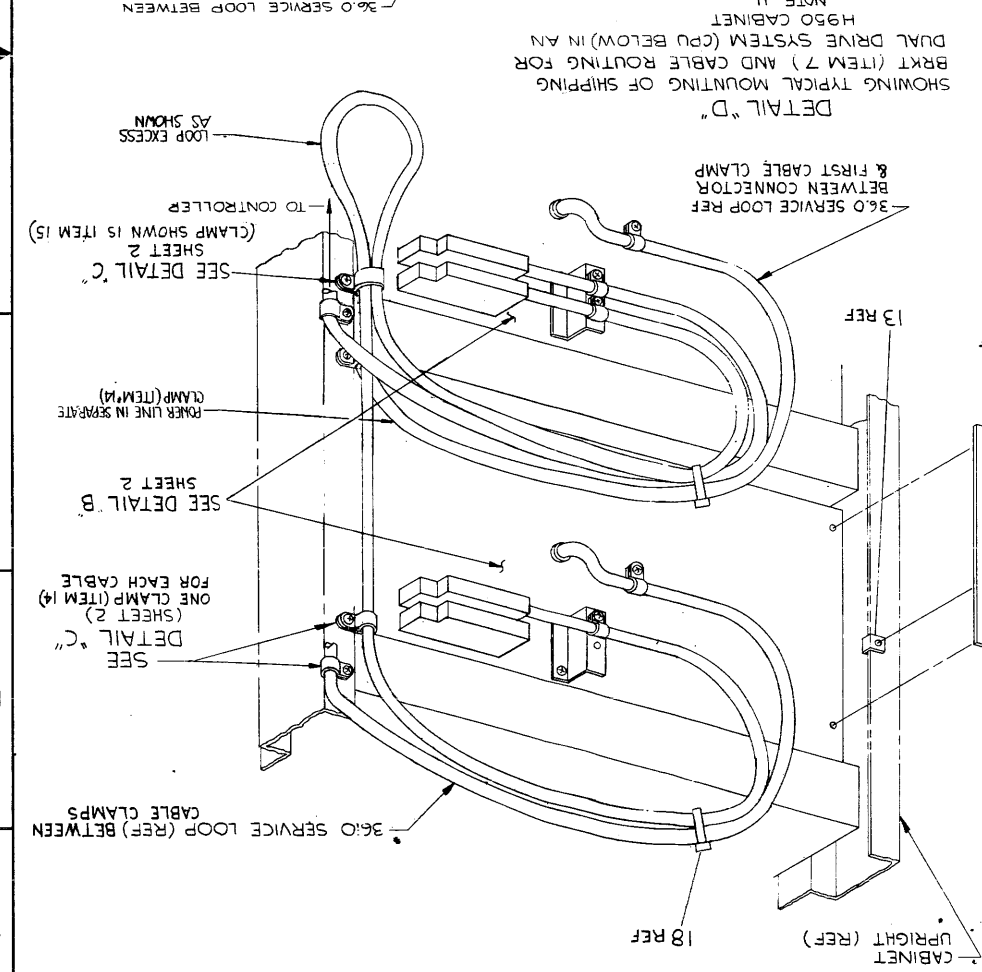
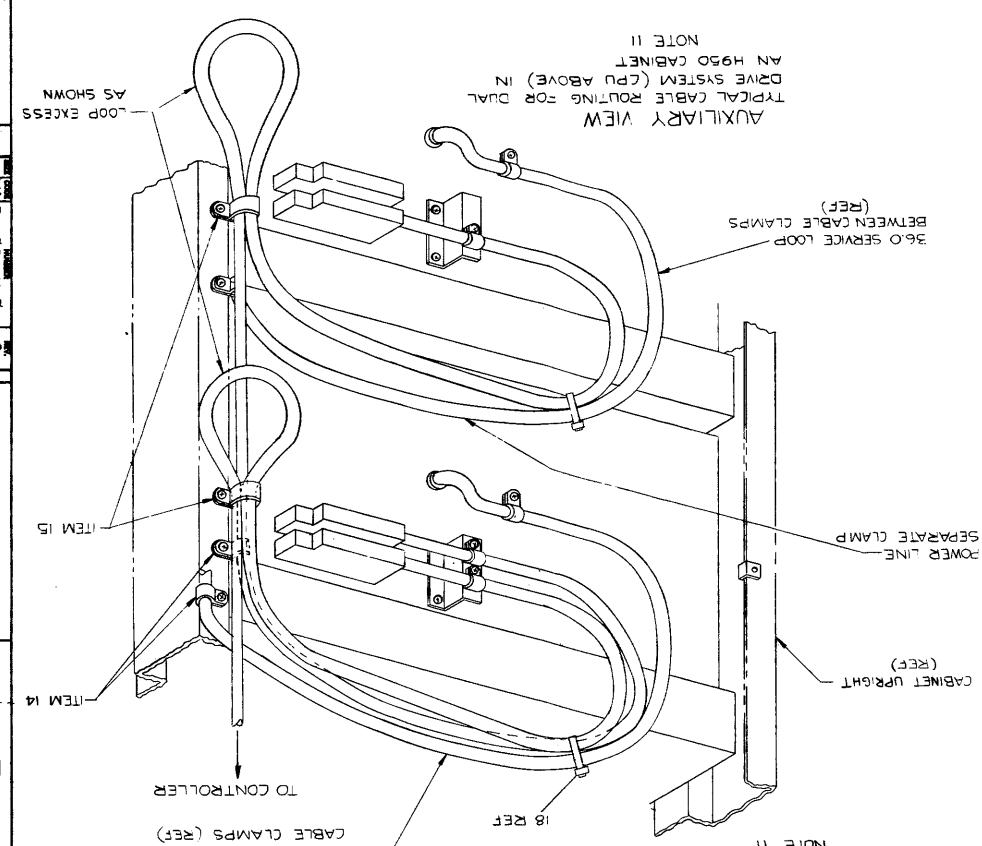


REVISIONS		
CHK	CHANGE NO.	REV.

TITLE		DISK DRIVE MTG KIT & CARTRIDGE		SIZE CODE		NUMBER		REV.	
SCALE	1:1	SHEET	3 OF 4	DIST.	EJA	RL02-AK-0	C		

8 7 6 5 4 3 2 1

REV.	DESCRIPTION

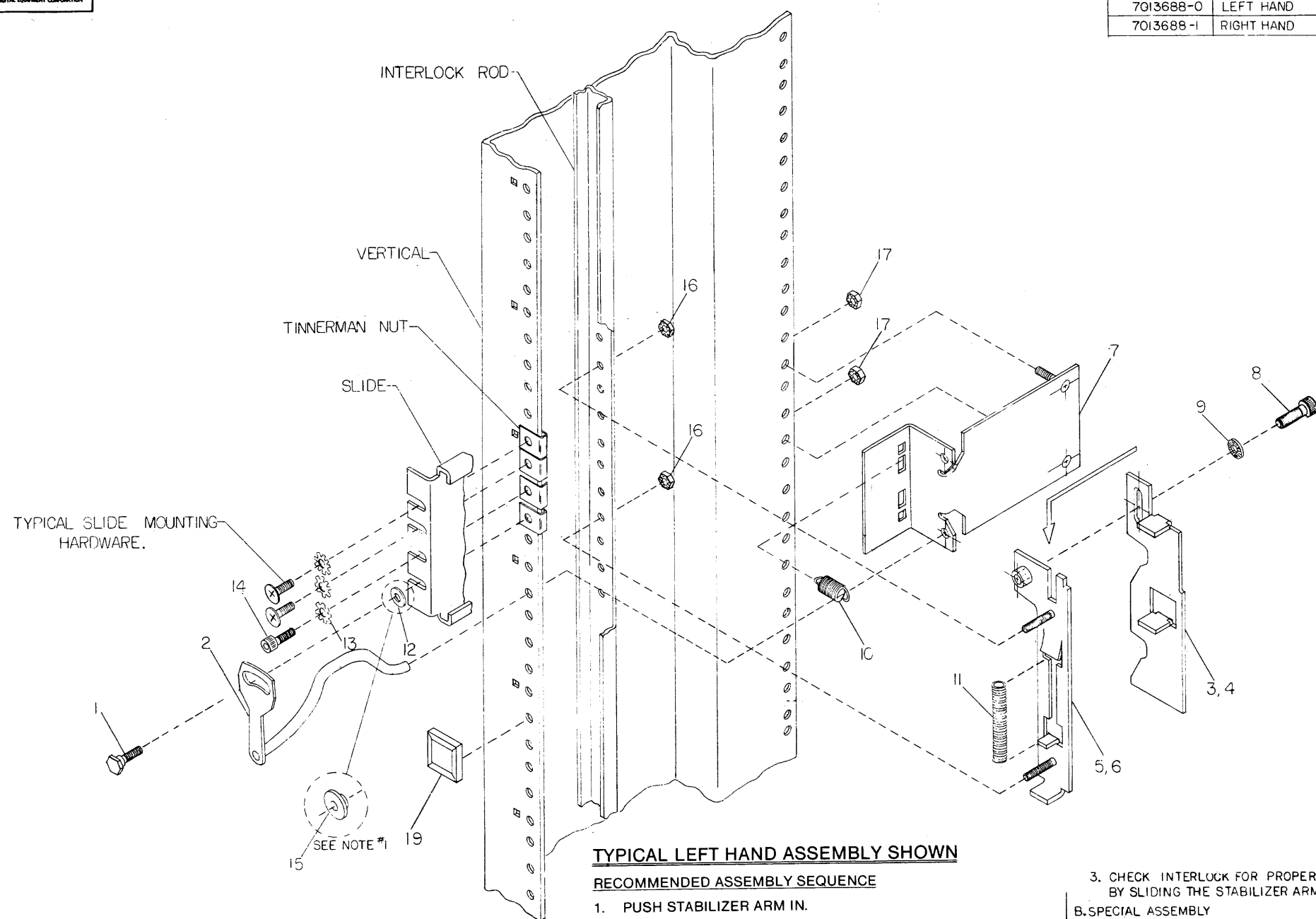


THIS DRAWING AND SPECIFICATIONS ARE UNCLASSIFIED AND ARE IN THE PUBLIC DOMAIN.
 DATE 12/15/79 BY 157-0

THIS DRAWING AND 9 CIRCUITS, HEREIN, ARE THE PROPERTY OF DIGITAL EQUIPMENT CORPORATION AND SHALL NOT BE REPRODUCED OR COPIED OR USED IN WHOLE OR IN PART AS THE BASIS FOR THE MANUFACTURE OR SALE OF ITEMS WITHOUT THE WRITTEN PERMISSION OF DIGITAL EQUIPMENT CORPORATION.
COPYRIGHT © 1975, DIGITAL EQUIPMENT CORPORATION

LEGEND	
PART NO.	VARIATION
7013688-0	LEFT HAND
7013688-1	RIGHT HAND

- NOTE:
- USE ITEM #15 (SHOULDER, WASHER) IN PLACE OF ITEM #12 (FLAT WASHER) WHEN ITEM #1 (RETAINER INTERLOCK) IS NOT MOUNTED THROUGH A SLIDE MOUNTING HOLE.
 - ASSEMBLE ITEM #9 (SPRING, WASHER) WITH CONVEX SIDE TOWARD ITEM #3, 4 (PLATE, CAM).
 - CABINET EQUIPMENT MOUNTING HOLES ARE NUMBERED CONSECUTIVELY FROM THE BOTTOM UP. A SQUARE HOLE IS PROVIDED EVERY FIFTH MOUNTING HOLE TO AID IN COUNTING. WITH STABILIZER ARM PUSHED IN, THE INTERLOCK ROD HOLE PATTERN LINES UP WITH THE VERTICAL MOUNTING HOLES AND IS NUMBERED THE SAME.
 - ITEM #14 MUST ALWAYS BE USED ADJACENT TO ITEM #1.
 - WHEN INSTALLING CABINET TRIM STRIPS, MAKE SURE THEY DON'T INTERFERE WITH INTERLOCK OPERATION.



TYPICAL LEFT HAND ASSEMBLY SHOWN

RECOMMENDED ASSEMBLY SEQUENCE

- PUSH STABILIZER ARM IN.
- ASSEMBLE ITEM #5, 6 AND 11 ONTO INTERLOCK ROD USING ITEMS #16.
- ASSEMBLE ITEM #3, 4 ONTO ITEM #5, 6 USING ITEMS #8 AND #9. TIGHTEN ITEM #8 ONLY AFTER DEPRESSING ITEM #3, 4 AGAINST SPRING AS FAR AS POSSIBLE.
- HOOK ITEM #10 INTO ITEM #7. USE UPPER SLOT FOR "U" ASSEMBLIES AND LOWER SLOT. FOR "D" ASSEMBLIES, INSTALL ITEM #7 ONTO CABINET VERTICAL USING ITEMS #17, TORQUE TO 100±30 INCH POUNDS.
- INSTALL ITEM #2 REMEMBERING TO PASS THROUGH ITEM #10 BEFORE ENGAGING ITEM #7.
- AT THIS POINT IN THE ASSEMBLY, PROCEDURES FOR NORMAL ASSEMBLY AND SPECIAL ASSEMBLY DIFFER.
 A. NORMAL ASSEMBLY
 - MOUNT SLIDE USING ITEMS #1, #12, #13, #14 AND TYPICAL SLIDE MOUNTING HARDWARE.
 - ADJUST INTERLOCK BY LOOSENING ITEM #8, ALLOWING ITEM #3, 4 TO ASSUME ITS PROPER POSITION AND RETIGHTEN ITEM #8 TO 70±30 INCH-POUNDS.

- CHECK INTERLOCK FOR PROPER OPERATION BY SLIDING THE STABILIZER ARM IN AND OUT.
- SPECIAL ASSEMBLY
 - INSTALL ITEM #1 AND #15 WITHOUT SLIDE.
 - ADJUST INTERLOCK BY LOOSENING ITEM #8, ALLOWING ITEM #3, 4 TO ASSUME ITS PROPER POSITION AND RETIGHTEN ITEM #8 TO 70±30 INCH-POUNDS.
 - REMOVE ITEM #1, #15.
 - MOUNT SLIDE USING ITEMS #1, #2, #3, #4 AND TYPICAL SLIDE MOUNTING HARDWARE.
 - CHECK INTERLOCK FOR PROPER OPERATION BY SLIDING THE STABILIZER ARM IN AND OUT.

7. BOTH SPECIAL AND NORMAL ASSEMBLIES—INSTALL ITEMS #19, ONE ON EACH VERTICAL MOUNTING RAIL (BOTH SIDES OF EQUIPMENT), IN THE PLACES WHERE THE REAR MOST PART OF THE BEZEL WOULD NORMALLY STRIKE. ITEMS #19 MUST NOT INTERFERE WITH ITEM #2 (ASSEMBLY, CHURCHKEY) OR TRIM STRIPS.

- INSTRUCTIONS**
- THE SYSTEM DOCUMENTATION WILL SPECIFY THE INTERLOCK LOCATION AND ASSEMBLY BY LETTER AND NUMBER CODE.
 - THE FIRST LETTER OF THE CODE SPECIFIES THE DIRECTION IN WHICH THE CHURCH KEY ASSEMBLY MUST BE INSTALLED. "U" SPECIFIES UP (AS SHOWN ON PRINT) AND "D" SPECIFIES DOWN.
 - THE SECOND LETTER (IF ANY) SPECIFIES WHICH OF THE TWO CAM PLATE NOTCHES ENGAGES WITH THE CHURCH KEY ASSEMBLY. IF NO LETTER APPEARS, WE CALL THIS THE NORMAL ASSEMBLY POSITION AND USE THE LOWER NOTCH. IF THE LETTER "S" APPEARS, WE CALL THIS THE SPECIAL ASSEMBLY POSITION AND USE THE UPPER NOTCH.
 - THE NUMBER AT THE END OF THE INSTALLATION CODE SPECIFIES THE CABINET MOUNTING HOLE FOR THE ITEM #1 (INTERLOCK RETAINER). ALL OTHER PARTS OF THE ASSEMBLY ARE REFERENCED FROM THIS HOLE USING THE CHART BELOW.

DIRECTION / NOTCH SPECIFICATION	BACK PLATE: LOCATION OF TOP MOUNTING STUD	OUTRIGGER: LOCATION OF TOP MOUNTING STUD
U	X + 4	X
US	X	X
D	X + 6	X + 3
DS	X + 2	X + 3

NOTE: 'X' IS THE SPECIFIED INTERLOCK RETAINER LOCATION.

CAUTION: OFF PRINT PARTS LIST A-PL-7013688-0-0

QUANTITY & VARIATION	DESCRIPTION				Q.T.Y.	PART NO.	ITEM NO.
	UNLESS OTHERWISE SPECIFIED DIMENSIONS ARE IN INCHES						
ANGLES	QUALITY OF SURFACE FINISH	APPROXIMATE	MINIMUM	MAXIMUM			
	IN						
THIRD ANGLE PROJECTION			DRW. R. OLSON		DATE		
REMOVE BURRS AND BREAK SHARP CORNERS			CHK'D.				
DO NOT SCALE DIMS			REL. NUMBER A-PL-7013688-0-0				
MATERIAL	PARTS LIST	SCALE	SIZE	NUMBER			
FINISH	NO.:	SCALE	SIZE	NUMBER			
	NO.:	SCALE	SIZE	NUMBER			
	NO.:	SCALE	SIZE	NUMBER			